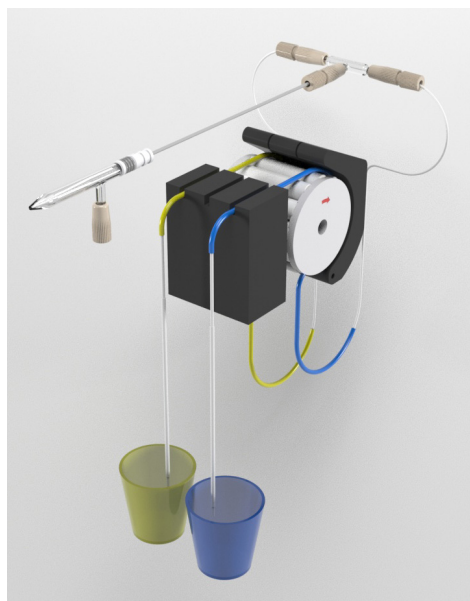


Trident CT™

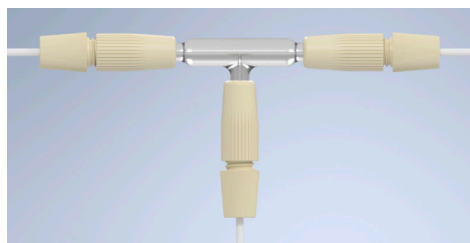
In-Line Reagent Additions Kit



Trident CT In-Line Reagent Additions Kit, P/N [60-703-1179](#) (peristaltic pump not included).

CT Mixing Chamber:

The heart of the kit is the mixing chamber, designed with zero dead volume CT fittings.



Trident CT Mixing Chamber Glass with 1/4-28 Connectors, P/N [60-703-1119](#).

With other mixing chambers, worn or improperly fitted connections leak, injecting a stream of air bubbles into the nebulizer flow, which degrades short-term analytical precision (%RSD). By using CT ratchet style fittings, the Trident CT eliminates air leaks, optimizing analytical performance.

The Trident CT™ mixing chamber is based on the industry proven design of the Trident, but with the addition of Glass Expansion's ConstantTorque™ (CT) technology to provide a simple-to-use, leak-free connection for both the internal standard and sample, every time.

The Trident CT provides a simple, easy and error-free way to continuously add internal standards or ionization buffers in ICP spectrometry.

Trident CT Features:

- Compact, efficient mixing chamber ensures complete mixing of the sample and reagent.
- CT fittings for a durable, leak-free seal on all connections.
- Zero dead volume connections.
- Completely modular kit so that damaged or lost components can easily be replaced.

The Trident CT In-Line Reagent Additions Kit, P/N [60-703-1179](#), and Kit Contents are displayed below:

Part Number	In-Line Reagent Additions Kit
60-703-1179	Trident CT In-Line Reagent Additions Kit (Complete)
Part Number	In-Line Reagent Additions Kit Contents
60-808-1187	Internal Standard Sample Probe
70-803-0748	Ferrule 1.3mm (PKT. 10)
70-803-0749	Ferrule 1/16 (PKT. 10)
70-803-1350	Ratchet Connector
60-703-1119	Mixing Chamber
70-803-1870	Connector Tube with 1/4-28 fitting 0.25mm x 700mm (PKT. 3)
70-803-1871	Connector Tube with 1/4-28 fitting 0.5mm x 700mm (PKT.3)
EZT-16-50-300	EzyFit Sample Tube 1/16 OD X 0.50mm ID X 300mm (PKT. 10)
NFT-16-50-300	UniFit Sample Tube 1/16 OD X 0.50mm ID X 300mm (PKT 10)

Note: 1 piece only is supplied with 70-803-0748, 70-803-0749, 70-803-1871, 70-803-1870, NFT-16-50-300 & EZT-16-50-300 as part of the Trident CT Internal Standard Kit.



Head office
6 Central Boulevard
Port Melbourne VIC 3207
Australia
+61 3 9320 1111
enquiries@geicp.com

Americas
31 Jonathan Bourne Drive
Unit 7, Pocasset, MA 02559
USA
508 563 1800
geusa@geicp.com

Europe
Friedenbachstrasse 9
35781 Weilburg
Germany
+49 6471 3778517
gegmbh@geicp.com